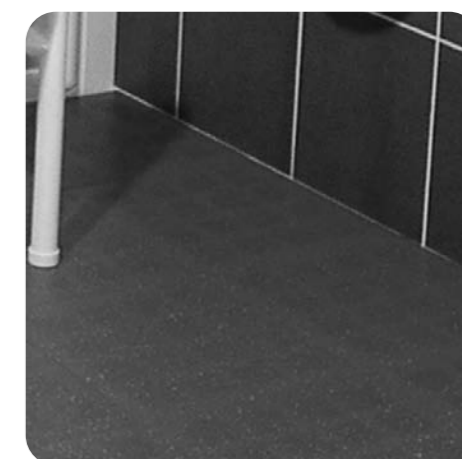


Northern Housing Consortium Limited
 Webster's Ropery
 Ropery Road
 Deptford
 Sunderland
 Tyne and Wear
 SR4 6DJ

Our Contact Numbers
 T: 0191 566 1000
 F: 0191 566 1001
 E: solutions@consortiumprocurement.org.uk



Adaptations Bathroom & Stairlift Framework



Adaptations Bathroom & Stairlift Framework

The Need

With the changing demographic profile across the UK, providing solutions that can improve the quality of life in your client's homes is becoming more of a priority for housing organisations.

Housing adaptations can play an important role in helping disabled or elderly people remain in their own home and maintain an independent lifestyle, rather than having to move or go into residential care. Many elderly and disabled people face difficulties in their day to day lives as their ability to use standard facilities in their home, such as the bathroom or stairs, becomes more difficult resulting in their independence and quality of lives being compromised.

Many organisations, from landlords to local housing authorities, have large budgets allocated to adaptations projects each year; however due to budget restrictions they also have long waiting lists of vulnerable clients requiring work. Additionally, there is significant pressure on front line services from both the government and regulatory bodies to reduce the time taken from identifying an individual's need to delivering the required adaptation to them.

The Partnership

As part of the drive to assist its Members to achieve greater efficiencies and obtain maximum value from the Disabled Facilities Grant and their adaptations budgets, Consortium Procurement has developed a new range of solutions for the provision of housing adaptations which are compliant with the EU Procurement Directives.

Following a rigorous tender and evaluation procedure conducted by Consortium Procurement and our Members, two new and innovative frameworks have been launched to deliver bathroom adaptations and stair lifts. The frameworks will be 4 years in length, expiring in 2012.

The frameworks offer choice and flexibility of interaction and have been carefully designed to include the following options:

- Bathroom Adaptations**
- Supply and Installation
 - Supply Only
 - Install Only

- Stair lifts**
- Supply and Installation
 - Supply and Installation + Maintenance
 - Maintenance of existing stair lifts only

The desired outcome of this framework was not only to provide financial benefits through collaborative purchasing, meaning budgets can stretch further, but also to assist our Members in improving timescales for adaptations, along with quality and service to their customers.

The Benefits

The benefits of this frameworks are to provide financial benefits and value for money for Members through collaborative purchasing, meaning budgets can stretch further; but also to assist our Members in improving timescales for adaptations, along with the level of quality and service to their customers.

Members can access this framework for both bathroom and stair lift installations without having to carry out their own tendering exercises. Benefits include:

- A compliant procurement route for purchasing
- A best value service contributing towards efficiency
- Removes the need to gather 3 quotations each time a job is identified
- Improved efficiencies from identification of need through to delivery

How to Access this Agreement

Local authorities, Home Improvement Agencies, Housing Associations, RSL's, ALMOs, LSVTs, and Social Services Departments can all access the bathrooms and stair lifts adaptations frameworks providing they are Members of the Northern Housing Consortium.

In order to find out which Partners operate in your area, for further information on the full range of products and services available via this adaptations framework, or to arrange a visit, or find out about membership, please contact the Business Development Team on 0191 5661000 or by email at solutions@consortiumprocurement.org.uk

Bathroom



The Nation's Local Builder™



Stairlift

